

Superficie Surface

Star 2

ST2

Perfil de superficie.
Fabricado con aluminio extrusionado y anodizado.
Diseñado como disipador de tiras de LED.

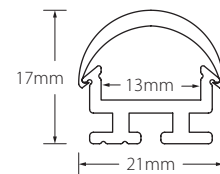
Surface profile.
Made of extruded and anodized aluminium.
Designed to dissipate LED strips.



Características técnicas

Technical data

Potencia disipada Power dissipation	Máx. 20W/m
Aleación de aluminio Aluminium alloy	AL6060
Longitud Length	2m ⁽¹⁾
IP	20
Acabado Finish	Anodizado Anodized / Pintado Painted



⁽¹⁾ Otras medidas disponibles. Máximo 6m. Other sizes available. Maximum 6m.



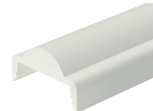
2100150
Transparente
Clear
120°
-0% lm



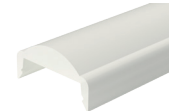
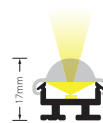
2100151
Mate
Medium frosted
120°
-25% lm



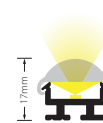
2100155
Óptica 15°
15° lens
15°
-10% lm



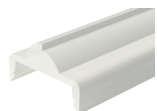
2100156
Óptica 30°
30° lens
30°
-10% lm



2100157
Óptica 60°
60° lens
60°
-10% lm



2100158
Óptica 90°
90° lens
90°
-10% lm



2102754
Óptica Asimétrica
Asymmetrical lens
Asimétrica
-10% lm



Superficie Surface

Star 2



220010003
Tapa final
End cap



231002500
Clip sujeción
Mounting bracket



233032076
Bracket 15°
Bracket 15°
Incluye tornillos
Screws included



233033076
Bracket 30°
Bracket 30°
Incluye tornillos
Screws included



233034076
Bracket 45°
Bracket 45°
Incluye tornillos
Screws included



2441000701702
Adhesivo fuga de luz
Light leak adhesive
70x17mm

Referencia Reference	Descripción Description	Acabado Finish	Color Color
ST2-A	Perfil superficie aluminio Aluminium surface profile	Anodizado Anodized	● Plata mate Matt silver
ST2-B	Perfil superficie aluminio Aluminium surface profile	Pintado Painted	○ Blanco White
ST2-N	Perfil superficie aluminio Aluminium surface profile	Anodizado Anodized	● Negro Black

Accesorios Accessories

Referencia Reference	Descripción Description	Acabado / Color Finish / Color
2100150	Difusor para ST2 Diffuser to ST2	Transparente Clear
2100151	Difusor para ST2 Diffuser to ST2	
2100155*	Difusor óptica 15° para ST2 15° lens diffuser to ST2	
2100156*	Difusor óptica 30° para ST2 30° lens diffuser to ST2	Mate Medium
2100157*	Difusor óptica 60° para ST2 60° lens diffuser to ST2	
2100158*	Difusor óptica 90° para ST2 90° lens diffuser to ST2	
2102754*	Difusor óptica asimétrica para ST2 Asymmetrical lens diffuser to ST2	
220010003	Tapa final ABS ABS end cap	
220510003	Tapa final ABS para óptica 15° ABS end cap for 15° lens	
220550003	Tapa final ABS para óptica 30° ABS end cap for 30° lens	
220530003	Tapa final ABS para óptica 60° ABS end cap for 60° lens	Gris Grey
220560003	Tapa final ABS para óptica 90° ABS end cap for 90° lens	
220520003	Tapa final ABS para óptica Asimétrica ABS end cap for Asymmetrical lens	
220010001	Tapa final ABS ABS end cap	Blanco White
220010002	Tapa final ABS ABS end cap	Negro Black
231002500	Clip sujeción Mounting bracket	Transparente Clear
233032076	Bracket 15° 15° bracket	
233033076	Bracket 30° 30° bracket	Plata mate Matt silver
233034076	Bracket 45° 45° bracket	
2441000701702	Adhesivo para fuga de luz S Light leak adhesive S	Negro Black

* Disponible solo hasta 2m
Available only until 2m



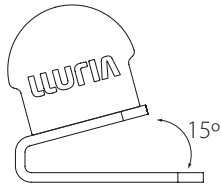
Superficie Surface Star 2

Brackets
15°, 30°, 45°

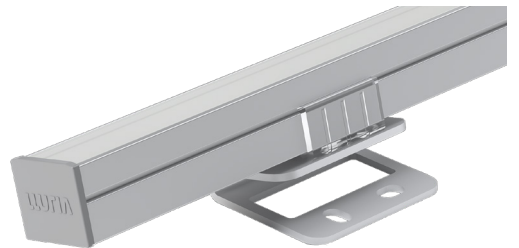
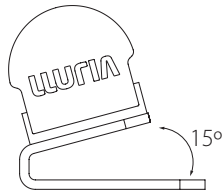
233032076



Perfil fijado directamente a bracket
Profile fixed directly to bracket



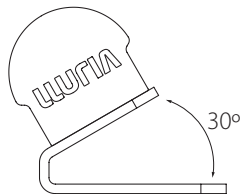
Perfil fijado con clip al bracket
Profile fixed with clip to the bracket



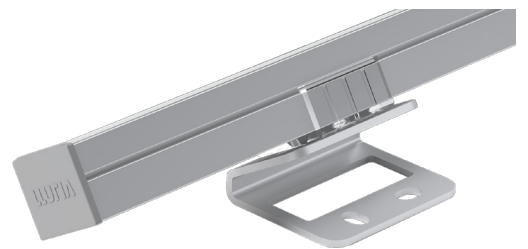
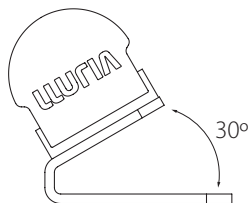
233033076



Perfil fijado directamente a bracket
Profile fixed directly to bracket



Perfil fijado con clip al bracket
Profile fixed with clip to the bracket



Superficie Surface

Star 2

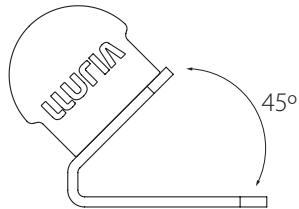
Brackets

15°, 30°, 45°

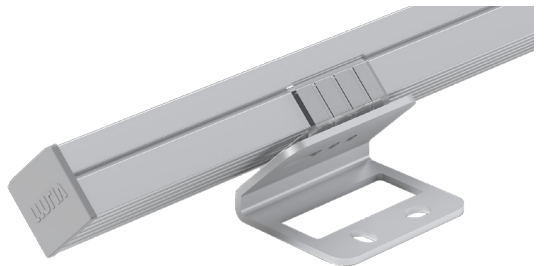
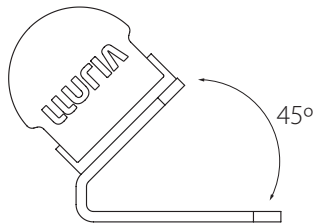
233034076



Perfil fijado directamente a bracket
Profile fixed directly to bracket



Perfil fijado con clip al bracket
Profile fixed with clip to the bracket



Advertencias Warnings

- Si la superficie donde va colocada la tira de LED tiene residuos, asegúrese de limpiarla hasta que quede libre de ellos.
- No utilizar este perfil para LEDs superiores a la potencia indicada, ya que no se podría garantizar la vida útil del LED.
- No utilice cola o silicona para fijar el perfil sin antes asegurar que la posición funcional es la correcta.
- If the surface where the LED strip is located has debris, be sure to clean it until it is free of them.
- Not use this profile to LED above the indicated power because it could not guarantee the life of the LED.
- Do not use glue or silicone to set the profile if before ensuring that the functional position is correct.

