

Superficie Surface

Star 27

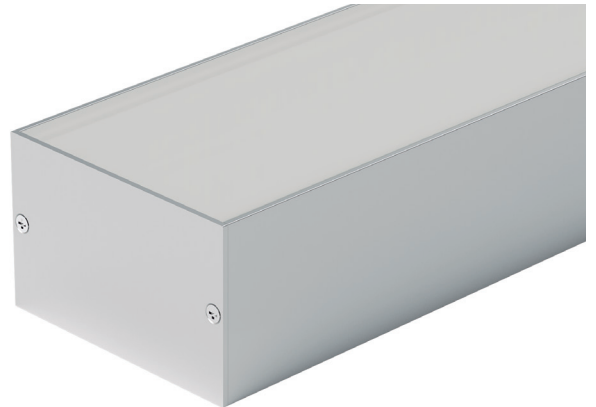
ST27

Perfil de superficie.

Fabricado con aluminio extrusionado y anodizado.
Diseñado como disipador de tiras de LED.

Surface profile.

Made of extruded and anodized aluminium.
Designed to dissipate LED strips.



Max. W / m ⁽¹⁾ 2x35W	Max. W / m ⁽²⁾ 4x15W	Max. W / m ⁽³⁾ 2x15W	AL 6060	2 m	Available 6 m	IP20
---	---	---	----------------	------------	-------------------------	-------------

⁽¹⁾ Potencia para iluminación inferior (Down), perfil con reflector. Power for down lighting (Down), profile with reflector.

⁽²⁾ Potencia para iluminación inferior (Down), perfil sin reflector. Power for down lighting (Down), profile without reflector.

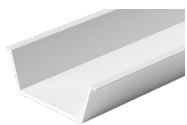
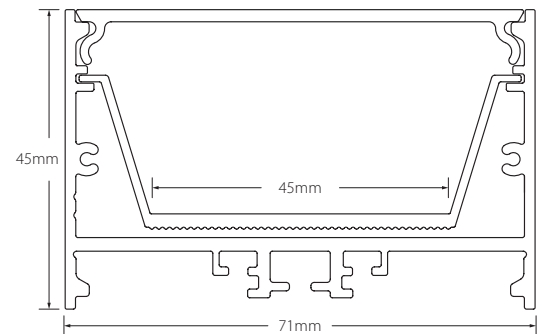
⁽³⁾ Potencia para iluminación superior (Up). Power for up lighting.

Características técnicas

Technical data

Potencia disipada Power dissipation	Máx. 2x35W/m ⁽¹⁾
Potencia disipada Power dissipation	Máx. 4x15W/m ⁽²⁾
Potencia disipada Power dissipation	Máx. 2x15W/m ⁽³⁾
Aleación de aluminio Aluminium alloy	AL6060
Longitud Length	2m ⁽¹⁾
IP	20
Acabado Finish	Anodizado Anodized / Pintado Painted

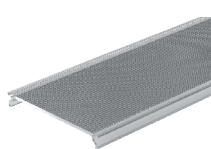
⁽¹⁾ Otras medidas disponibles. Máximo 6m. Other sizes available. Maximum 6m.



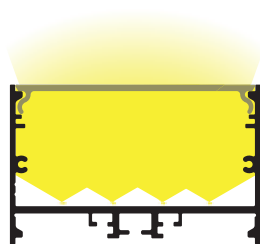
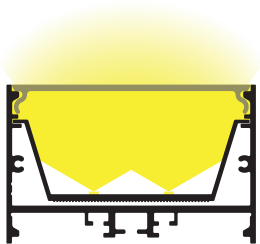
270011007
Reflector aluminio
Aluminium reflector
75°
-15% lm



2101551
Mate
Medium frosted
65°
-25% lm



2101560
Microprismático
transparente
Clear microprismatic



Superficie Surface

Star 27

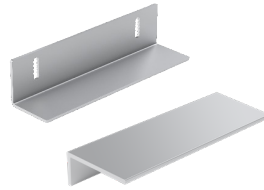


210151007
Tapa ciega aluminio
Aluminium cover cap



220190007
Tapa final aluminio
Aluminium end cap

Incluye tornillos
Screws included



233013073
Aleta pladur, 2 piezas 1 juego
Plasterboard flap, 2 pieces 1 set

Incluye tornillos
Screws included

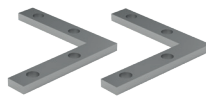


231013070
Clip sujeción metálico
Metal mounting bracket



2430010
Pieza unión metálica
Metal union piece

Incluye tornillos y adhesivo fuga luz
Screws and light leak adhesive included



2430011
Pieza unión metálica, 90°
Metal union piece, 90°

Incluye tornillos y adhesivo fuga luz
Screws and light leak adhesive included



2430012
Pieza unión metálica, 90° int./ext.
Metal union piece, 90° int./ext.

Incluye tornillos y adhesivo fuga luz
Screws and light leak adhesive included



2441001401702
Adhesivo fuga de luz
Light leak adhesive
140x17mm

Referencia Reference	Descripción Description	Acabado Finish	Color Color
ST27-A	Perfil superficie aluminio Aluminium surface profile	Anodizado Anodized	● Plata mate Matt silver
ST27-B	Perfil superficie aluminio Aluminium surface profile	Pintado Painted	○ Blanco White
ST27-N	Perfil superficie aluminio Aluminium surface profile	Anodizado Anodized	● Negro Black

Accesorios Accessories

Referencia Reference	Descripción Description	Acabado / Color Finish / Color
270011007	Reflector para ST27 Reflector to ST27	Plata mate Matt silver
2101551	Difusor para ST27 Diffuser to ST27	Mate Medium frosted
2101560	Microprismático transparente Clear microprismatic	Microprismatic Microprismatic
210151007	Tapa ciega aluminio Aluminium cover cap	Plata mate Matt silver
210151001	Tapa ciega aluminio Aluminium cover cap	Blanco White
210151002	Tapa ciega aluminio Aluminium cover cap	Negro Black
220190007	Tapa final aluminio Aluminium end cap	Plata mate Matt silver
220190001	Tapa final aluminio Aluminium end cap	Blanco White
220190002	Tapa final aluminio Aluminium end cap	Negro Black
231013070	Clip sujeción metálico Metal mounting bracket	Zincado Zinc
233013073	Aleta pladur, 2 piezas 1 juego Plasterboard flap, 1 pieces 1 set	Plata mate Matt silver
25300102202	Pletina plástico reciclado Recycled plastic plate	Negro Black
2430010	Pieza unión metálica, 2 piezas 1 juego Metal union piece, 2 pieces 1 kit	
2430011	Pieza unión a 90° metálica, 2 piezas 1 juego Metal 90° union piece, 2 pieces 1 kit	Zincado Zinc
2430012	Pieza unión a 90° metálica interior o exterior, 2 piezas 1 juego Metal internal or external 90° union piece, 2 pieces 1 kit	
2441001401702	Adhesivo para fuga de luz L Light leak adhesive L	Negro Black

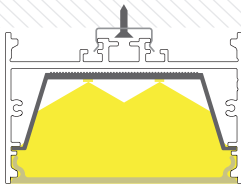


Superficie Surface

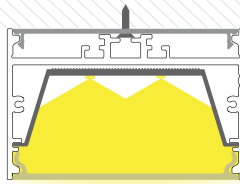
Star 27

• **Montaje**
Assembly

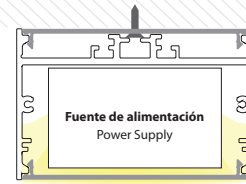
Fijación con clip
Mounting with bracket



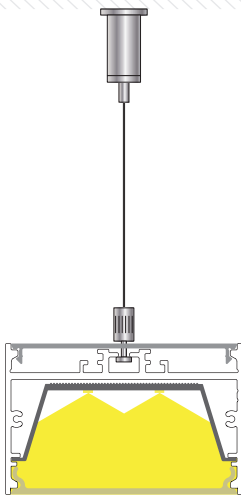
Fijación con tapa ciega
Mounting with cover cap



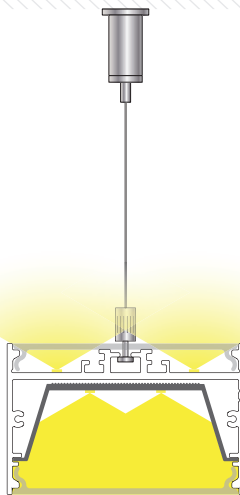
Tapas ciegas para fijación y para ocultar F.A
Cover caps, concealing the mounting and P.S



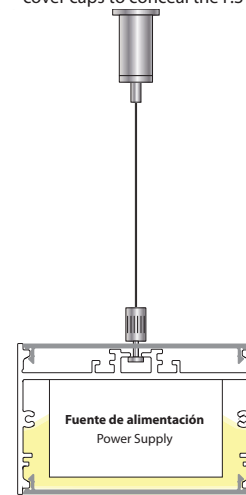
Fijación con tensor
Mounting with tensioner



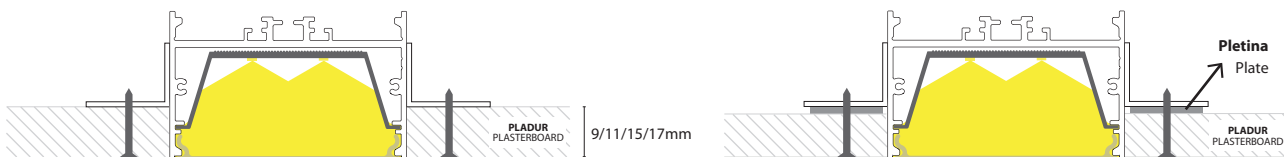
Fijación con tensor y doble difusor (Up&Down)
Mounting with tensioner and double diffuser (Up&Down)



Fijación con tensor y tapas ciegas para ocultar F.A
Mounting with tensioner and cover caps to conceal the P.S



Fijación con aleta
Mounting with flap



Superficie Surface

Star 27



Advertencias

Warnings

- Si la superficie donde va colocada la tira de LED tiene residuos, asegúrese de limpiarla hasta que quede libre de ellos.
- No utilizar este perfil para LEDs superiores a la potencia indicada, ya que no se podría garantizar la vida útil del LED.
- No utilice cola o silicona para fijar el perfil sin antes asegurar que la posición funcional es la correcta.
- If the surface where the LED strip is located has debris, be sure to clean it until it is free of them.
- Not use this profile to LED above the indicated power because it could not guarantee the life of the LED.
- Do not use glue or silicone to set the profile if before ensuring that the functional position is correct.

