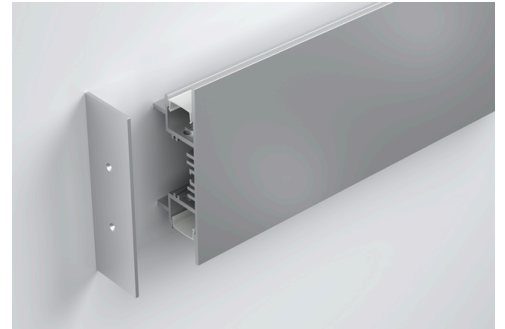


Superficie Surface  
Star 37

# ST37

Perfil Two Sides de superficie. Disipa altas potencias. Con opción de incluir un criver interno. Diseñado como disipador de tiras LED.

Two Sides surface profile. High power dissipation. With option to include an internal criver. Designed as a heatsink for LED strips.

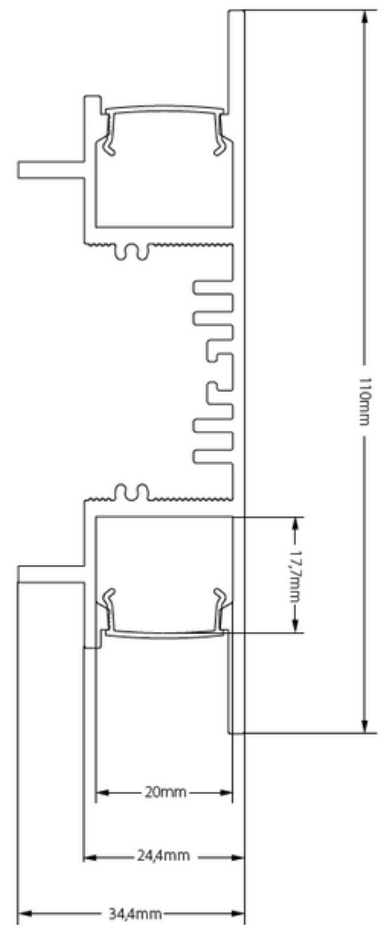


<b>2x45W</b> Max. W/m	<b>IP20</b>	<b>AL 6060</b>	Custom	2m	Available 6m	<b>MS</b>	<b>W</b>	<b>B</b>
-----------------------------	-------------	----------------	--------	----	-----------------	-----------	----------	----------

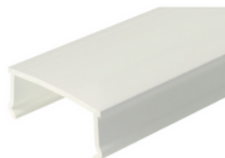
### Características técnicas

Technical data

<b>Potencia disipada</b> Power dissipation	Máx. 2x45W/m
<b>Aleación de aluminio</b> Aluminium alloy	AL6060
<b>Longitud</b> Length	2m
<b>IP</b>	20
<b>Acabado</b> Finish	Anodizado Anodized / Pintado Painted



**2100350**  
Transparente  
Frosted  
55°  
-0% lm



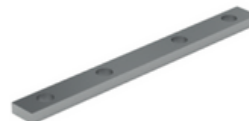
**2100351**  
Mate  
Frosted  
55°  
-40% lm



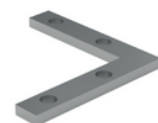
**220710007**  
Tapa final  
End cap



**23503708**  
Soporte sujeción pared  
Wall mounting bracket



**2410010**  
Pieza unión  
Union piece



**2410011**  
Pieza unión 90°  
90° union piece



## Superficie Surface Star 37



**2410012**  
Pieza unión 90° int./ ext.  
Int./ext.90° union piece



**2441001401702**  
Adhesivo fuga de luz  
Light leakage adhesive

Referencia Reference	Descripción Description	Acabado Finish	Color Color
<b>ST37- A</b>	<b>Perfil superficie aluminio</b> Aluminium surface profile	<b>Anodizado</b> Anodized	● <b>Plata mate</b> Matt silver
<b>ST37- B</b>	<b>Perfil superficie aluminio</b> Aluminium surface profile	<b>Pintado</b> Painted	○ <b>Blanco</b> White
<b>ST37- N</b>	<b>Perfil superficie aluminio</b> Aluminium surface profile	<b>Anodizado</b> Anodized	● <b>Negro</b> Black

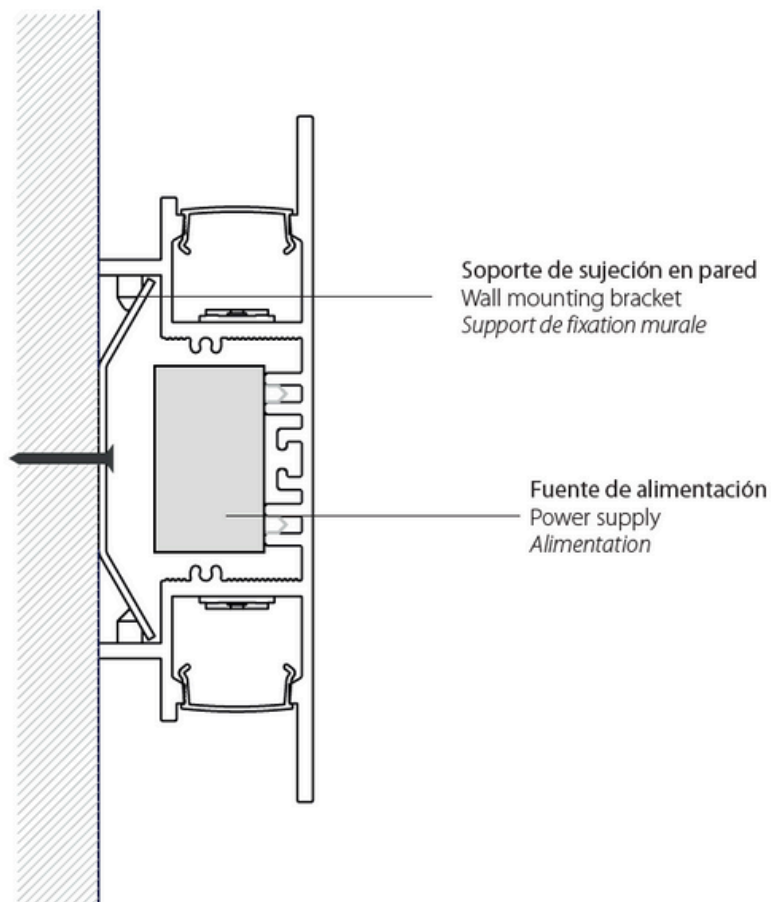
## Accesorios Accessories

Referencia Reference	Descripción Description	Acabado / Color Finish / Color
<b>2100350</b>	<b>Difusor para ST37</b> Diffuser to ST38	<b>Transparente</b> Clear
<b>2100351</b>	<b>Difusor para ST37</b> Diffuser to ST38	<b>Mate</b> Medium
<b>220710007</b>	<b>Tapa final</b> End cap	<b>Plata mate</b> Matt silver
<b>220710001</b>	<b>Tapa final</b> End cap	<b>Blanco</b> White
<b>220710002</b>	<b>Tapa final</b> End cap	<b>Negro</b> Black
<b>23503708</b>	<b>Soporte sujeción pared</b> Wall mounting bracket <b>Incluye tornillos</b> Screws included	<b>Galvanizado</b> Galvanized
<b>2410010</b>	<b>Pieza de unión metálica</b> Metal joining piece <b>Incluye tornillos y adhesivo fuga de luz</b> Includes screws and light leakage adhesive	<b>Galvanizado</b> Galvanized
<b>2410011</b>	<b>Pieza de unión a 90° metálica</b> Metal 90° joining piece <b>Incluye tornillos y adhesivo fuga de luz</b> Includes screws and light leakage adhesive	<b>Galvanizado</b> Galvanized
<b>2410012</b>	<b>Pieza de unión a 90° metálica interior o exterior</b> Metal internal or external 90° joining piece <b>Incluye tornillos y adhesivo fuga de luz</b> Includes screws and light leakage adhesive	<b>Galvanizado</b> Galvanized
<b>2441001401702</b>	<b>Adhesivo fuga de luz</b> Light leakage adhesive 140x17mm	<b>Negro</b> Black



## Superficie Surface Star 37

• **Instalación** / Facility / Facilité



### Advertencias Warnings

- Si la superficie donde va colocada la tira de LED tiene residuos, asegúrese de limpiarla hasta que quede libre de ellos.
- No utilizar este perfil para LEDs superiores a la potencia indicada, ya que no se podría garantizar la vida útil del LED.
- No utilice cola o silicona para fijar el perfil sin antes asegurar que la posición funcional es la correcta.
- If the surface where the LED strip is located has debris, be sure to clean it until it is free of them.
- Not use this profile to LED above the indicated power because it could not guarantee the life of the LED.
- Do not use glue or silicone to set the profile if before ensuring that the functional position is correct.