

## Superficie Surface

Star 4

# ST4

Perfil de superficie.  
Fabricado con aluminio extrusionado y anodizado.  
Diseñado como disipador de tiras de LED.

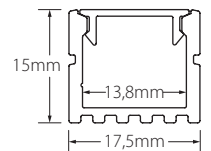
Surface profile.  
Made of extruded and anodized aluminium.  
Designed to dissipate LED strips.



### Características técnicas

Technical data

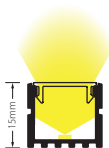
Potencia disipada Power dissipation	Máx. 20W/m
Aleación de aluminio Aluminium alloy	AL6060
Longitud Length	2m <sup>(1)</sup>
IP	20
Acabado Finish	Anodizado Anodized / Pintado Painted



<sup>(1)</sup> Otras medidas disponibles. Máximo 6m. Other sizes available. Maximum 6m.



**2100250**  
Transparente  
Clear  
**60°**  
**-0% lm**



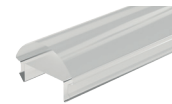
**2100251**  
Mate  
Medium frosted  
**60°**  
**-30% lm**



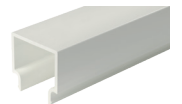
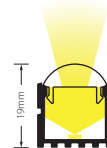
**2100252**  
Opal  
Frosted  
**60°**  
**-40% lm**



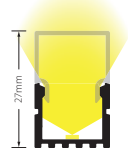
**2100202**  
Negro  
Black  
**60°**  
**-70% lm**



**2100256**  
Óptica 30°  
30° lens  
**30°**  
**-5% lm**



**2100253**  
Mate  
Medium frosted  
**60°**  
**-50% lm**



**220030003**  
Tapa final  
End cap



**220031003**  
Tapa final con taladro  
End cap with cable hole



**220032003**  
Tapa final 3L  
3L end cap



**231003500**  
Clip sujeción  
Mounting bracket



**231003070**  
Clip sujeción  
Mounting bracket



### Superficie Surface

#### Star 4



**233032076**  
Bracket 15°  
Bracket 15°

Incluye tornillos  
Screws included



**233033076**  
Bracket 30°  
Bracket 30°

Incluye tornillos  
Screws included



**233034076**  
Bracket 45°  
Bracket 45°

Incluye tornillos  
Screws included



**233023070**  
Pieza sujeción  
Fixing piece



**2441000701702**  
Adhesivo fuga de luz  
Light leak adhesive

70x17mm

Referencia Reference	Descripción Description	Acabado Finish	Color Color
ST4-A	Perfil superficie aluminio Aluminium surface profile	Anodizado Anodized	● Plata mate Matt silver
ST4-B	Perfil superficie aluminio Aluminium surface profile	Pintado Painted	○ Blanco White
ST4-N	Perfil superficie aluminio Aluminium surface profile	Anodizado Anodized	● Negro Black

### Accesorios Accessories

Referencia Reference	Descripción Description	Acabado / Color Finish / Color
2100250	Difusor para ST4 Diffuser to ST4	Transparente Clear
2100251	Difusor para ST4 Diffuser to ST4	Mate Medium
2100252	Difusor para ST4 Diffuser to ST4	Opal Frosted
2100202	Difusor para ST4 Diffuser to ST4	Negro Black
2100256	Difusor óptica 30° para ST4 30° lens diffuser to ST4	Transparente Clear
2100253	Difusor 3L para ST4 3L diffuser to ST4	Mate Medium
220030003	Tapa final ABS ABS end cap	
220031003	Tapa final ABS con taladro ABS end cap with cable hole	Gris Grey
220032003	Tapa final 3L ABS ABS 3L end cap	
220030001	Tapa final ABS ABS end cap	
220031001	Tapa final ABS con taladro ABS end cap with cable hole	Blanco White
220032001	Tapa final 3L ABS ABS 3L end cap	
220030002	Tapa final ABS ABS end cap	
220031002	Tapa final ABS con taladro v end cap with cable hole	Negro Black
220032002	Tapa final 3L ABS ABS 3L end cap	
231003500	Clip sujeción policarbonato Polycarbonate mounting bracket	Transparente Clear
231003070	Clip sujeción metálico Metal mounting bracket	Zincado Zinc
233032076	Bracket 15° 15° bracket	
233033076	Bracket 30° 30° bracket	Plata mate Matt silver
233034076	Bracket 45° 45° bracket	
233023070	Pieza de sujeción metálica Metal fixing piece	Zincado Zinc
2441000701702	Adhesivo para fuga de luz S Light leak adhesive S	Negro Black



## Superficie Surface

### Star 4

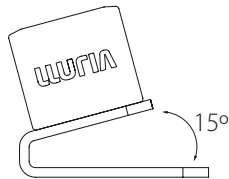
#### Brackets

15°, 30°, 45°

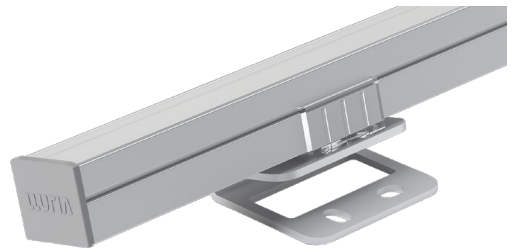
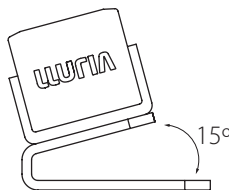
#### 233032076



Perfil fijado directamente a bracket  
Profile fixed directly to bracket



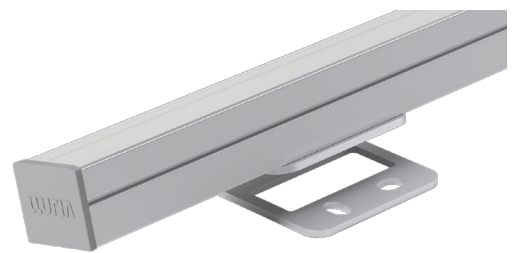
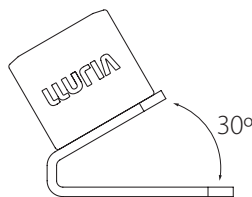
Perfil fijado con clip al bracket  
Profile fixed with clip to the bracket



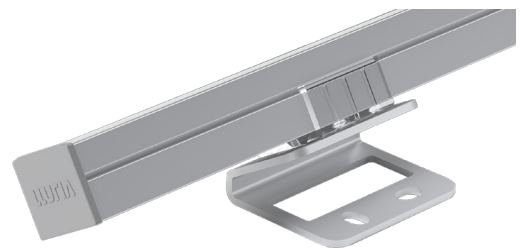
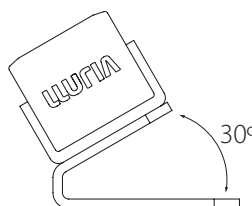
#### 233033076



Perfil fijado directamente a bracket  
Profile fixed directly to bracket



Perfil fijado con clip al bracket  
Profile fixed with clip to the bracket



## Superficie Surface

### Star 4

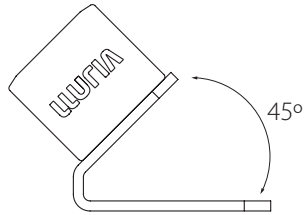
#### Brackets

15°, 30°, 45°

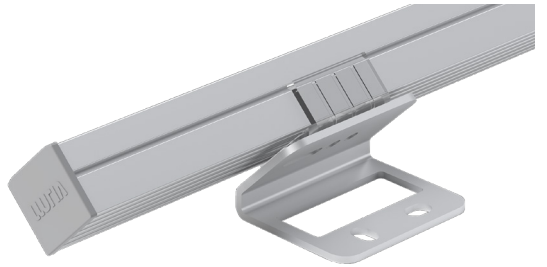
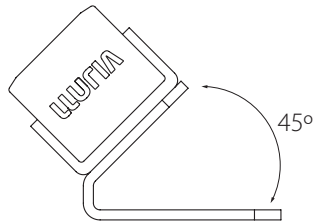
#### 233034076



Perfil fijado directamente a bracket  
Profile fixed directly to bracket



Perfil fijado con clip al bracket  
Profile fixed with clip to the bracket



#### Advertencias Warnings

- Si la superficie donde va colocada la tira de LED tiene residuos, asegúrese de limpiarla hasta que quede libre de ellos.
- No utilizar este perfil para LEDs superiores a la potencia indicada, ya que no se podría garantizar la vida útil del LED.
- No utilice cola o silicona para fijar el perfil sin antes asegurar que la posición funcional es la correcta.
- If the surface where the LED strip is located has debris, be sure to clean it until it is free of them.
- Not use this profile to LED above the indicated power because it could not guarantee the life of the LED.
- Do not use glue or silicone to set the profile if before ensuring that the functional position is correct.

