

## Superficie Surface

Star 4 Plus

# ST4P

Perfil de superficie.

Fabricado con aluminio extrusionado y anodizado.  
Diseñado como disipador de tiras de LED.

Surface profile.

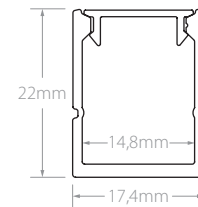
Made of extruded and anodized aluminium.  
Designed to dissipate LED strips.



### Características técnicas

Technical data

Potencia disipada Power dissipation	Máx. 20W/m
Aleación de aluminio Aluminium alloy	AL6060
Longitud Length	2m <sup>(1)</sup>
IP	20
Acabado Finish	Anodizado Anodized / Pintado Painted



<sup>(1)</sup> Otras medidas disponibles. Máximo 6m. Other sizes available. Maximum 6m.



**2100250**  
Transparente  
Clear  
40°  
-0% lm



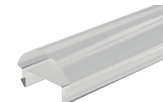
**2100251**  
Mate  
Medium frosted  
40°  
-35% lm



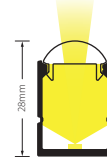
**2100252**  
Opal  
Frosted  
40°  
-45% lm



**2100202**  
Negro  
Black  
40°  
-75% lm



**2100256**  
Óptica 30°  
30° lens  
15°  
-10% lm



**220430003**  
Tapa final  
End cap



**220431003**  
Tapa final con taladro  
End cap with cable hole



**220506003**  
Tapa final 15° con visera  
15° end cap with visor



**231003500**  
Clip sujeción  
Mounting bracket



**231003070**  
Clip sujeción  
Mounting bracket



### Superficie Surface

#### Star 4 Plus



**233032076**  
Bracket 15°  
Bracket 15°

Incluye tornillos  
Screws included



**233033076**  
Bracket 30°  
Bracket 30°

Incluye tornillos  
Screws included



**233034076**  
Bracket 45°  
Bracket 45°

Incluye tornillos  
Screws included



**233023070**  
Pieza sujeción  
Fixing piece



**2441000701702**  
Adhesivo fuga de luz  
Light leak adhesive

70x17mm

Referencia Reference	Descripción Description	Acabado Finish	Color Color
ST4P-A	Perfil superficie aluminio Aluminium surface profile	Anodizado Anodized	● Plata mate Matt silver
ST4P-B	Perfil superficie aluminio Aluminium surface profile	Pintado Painted	○ Blanco White
ST4P-N	Perfil superficie aluminio Aluminium surface profile	Anodizado Anodized	● Negro Black

### Accesorios Accessories

Referencia Reference	Descripción Description	Acabado / Color Finish / Color
2100250	Difusor para ST4P Diffuser to ST4P	Transparente Clear
2100251	Difusor para ST4P Diffuser to ST4P	Mate Medium
2100252	Difusor para ST4P Diffuser to ST4P	Opal Frosted
2100202	Difusor para ST4P Diffuser to ST4P	Negro Black
2100256	Difusor óptica 15° para ST4P 15° lens diffuser to ST4P	Transparente Clear
220430003	Tapa final ABS ABS end cap	
220431003	Tapa final ABS con taladro ABS end cap with cable hole	Gris Grey
220506003	Tapa final 15° con visera 15° end cap with visor	
220430001	Tapa final ABS ABS end cap	
220431001	Tapa final ABS con taladro ABS end cap with cable hole	Blanco White
220506001	Tapa final 15° con visera 15° end cap with visor	
220430002	Tapa final ABS ABS end cap	
220431002	Tapa final ABS con taladro ABS end cap with cable hole	Negro Black
220506002	Tapa final 15° con visera 15° end cap with visor	
231003500	Clip sujeción policarbonato Polycarbonate mounting bracket	Transparente Clear
231003070	Clip sujeción metálico Metal mounting bracket	Zincado Zinc
233032076	Bracket 15° 15° bracket	
233033076	Bracket 30° 30° bracket	Plata mate Matt silver
233034076	Bracket 45° 45° bracket	
233023070	Pieza de sujeción metálica Metal fixing piece	Zincado Zinc
2441000701702	Adhesivo para fuga de luz S Light leak adhesive S	Negro Black



## Superficie Surface

### Star 4 Plus

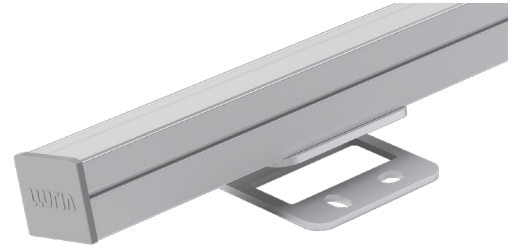
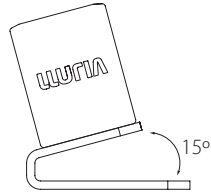
#### Brackets

15°, 30°, 45°

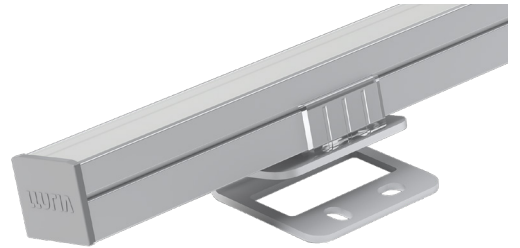
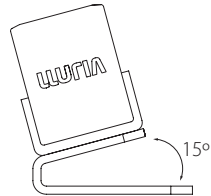
#### 233032076



Perfil fijado directamente a bracket  
Profile fixed directly to bracket



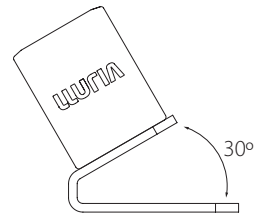
Perfil fijado con clip al bracket  
Profile fixed with clip to the bracket



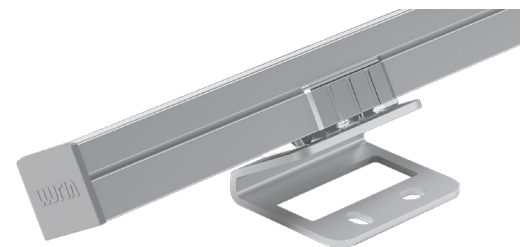
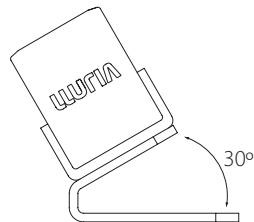
#### 233033076



Perfil fijado directamente a bracket  
Profile fixed directly to bracket



Perfil fijado con clip al bracket  
Profile fixed with clip to the bracket



## Superficie Surface

### Star 4 Plus

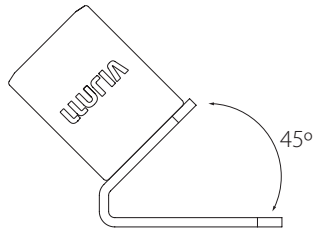
#### Brackets

15°, 30°, 45°

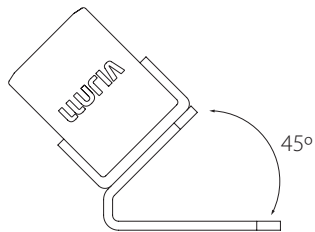
#### 233034076



Perfil fijado directamente a bracket  
Profile fixed directly to bracket



Perfil fijado con clip al bracket  
Profile fixed with clip to the bracket



#### Advertencias Warnings

- Si la superficie donde va colocada la tira de LED tiene residuos, asegúrese de limpiarla hasta que quede libre de ellos.
- No utilizar este perfil para LEDs superiores a la potencia indicada, ya que no se podría garantizar la vida útil del LED.
- No utilice cola o silicona para fijar el perfil sin antes asegurar que la posición funcional es la correcta.
- If the surface where the LED strip is located has debris, be sure to clean it until it is free of them.
- Not use this profile to LED above the indicated power because it could not guarantee the life of the LED.
- Do not use glue or silicone to set the profile if before ensuring that the functional position is correct.

