

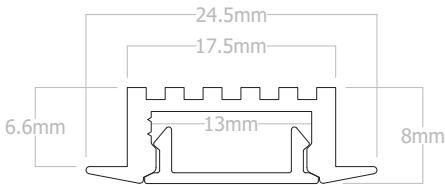


Perfil empotrable.
Fabricado con aluminio extrusionado y anodizado.
Diseñado como disipador de tiras de LED.

*Recessed profile.
Made of extruded and anodized aluminum.
Designed to dissipate LED strips.*



Características técnicas / Technical data



Potencia disipada / Power dissipation	Máx. 20W/m
Aleación de aluminio / Aluminium alloy	AL 6060
Longitud / Length	2m ⁽¹⁾
IP	20
Acabado / Finish	Anodizado / Anodized Pintado / Painted

(1) Otras medidas disponibles. Máximo 6m. / Other sizes available. Maximum 6m.



2100250



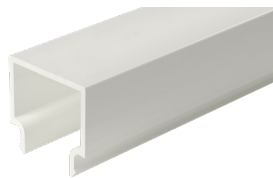
2100251



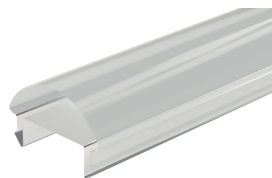
2100252



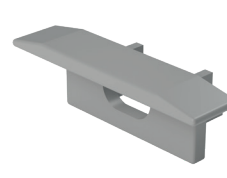
2100202



2100253



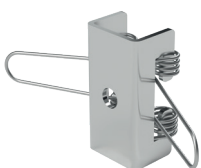
2100256



220261003



220263003



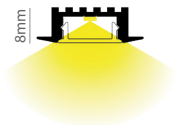
232024070



233023070

Referencia <i>Reference</i>	Descripción <i>Description</i>	Acabado <i>Finish</i>	Color <i>Color</i>
ST51-A	Perfil empotrable sin difusor <i>Recessed profile without diffuser</i>	Anodizado <i>Anodized</i>	● Plata mate <i>Matt silver</i>
ST51-B	Perfil empotrable sin difusor <i>Recessed profile without diffuser</i>	Pintado <i>Painted</i>	○ Blanco <i>White</i>
ST51-N	Perfil empotrable sin difusor <i>Recessed profile without diffuser</i>	Anodizado <i>Anodized</i>	● Negro <i>Black</i>
2100250	Difusor para ST51 <i>Diffuser to ST51</i>	○ Transparente / Clear	
2100251	Difusor para ST51 <i>Diffuser to ST51</i>	● Mate / Medium frosted	
2100252	Difusor para ST51 <i>Diffuser to ST51</i>	● Opal / Frosted	
2100202	Difusor para ST51 <i>Diffuser to ST51</i>	● Negro / Black	
2100253	Difusor 3L para ST51 <i>3L diffuser to ST51</i>	● Mate / Medium frosted	
2100256	Difusor óptica 30° para ST51 <i>30° lens diffuser to ST51</i>	○ Transparente / Clear	
220261003	Tapa final con taladro para ST51 <i>End cap with cable hole to ST51</i>	● Gris / Grey	
220263003	Tapa final 3L con taladro para ST51 <i>3L end cap with cable hole to ST51</i>		
220261001	Tapa final con taladro para ST51 <i>End cap with cable hole to ST51</i>	○ Blanco / White	
220263001	Tapa final 3L con taladro para ST51 <i>3L end cap with cable hole to ST51</i>		
220261002	Tapa final con taladro para ST51 <i>End cap with cable hole to ST51</i>	● Negro / Black	
220263002	Tapa final 3L con taladro para ST51 <i>3L end cap with cable hole to ST51</i>		
232024070	Grapa sujeción para ST51 <i>Clamping piece to ST51</i>	● Plata mate / Matt silver	
233023070	Pieza de sujeción para ST51 <i>Fixing piece to ST51</i>	● Zincado / Zinc	

• **Difusores / Diffusers**



115°
Transparente
Clear
-0% lumens



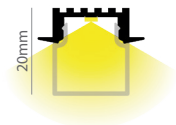
115°
Mate
Medium frosted
-10% lumens



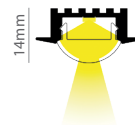
115°
Opal
Frosted
-25% lumens



115°
Negro
Black
-65% lumens



115°
Mate
Medium frosted
-30% lumens



30°
Transparente
Clear
-5% lumens

⚠ Advertencias / Warnings

- Si la superficie donde va colocada la tira de LED tiene residuos, asegúrese de limpiarla hasta que quede libre de ellos.
- No utilizar este perfil para LEDs superiores a la potencia indicada, ya que no se podría garantizar la vida útil del LED.
- No utilice cola o silicona para fijar el perfil sin antes asegurar que la posición funcional es la correcta.
- *If the surface where the LED strip is located has debris, be sure to clean it until it is free of them.*
- *Not use this profile to LED above the indicated power because it could not guarantee the life of the LED.*
- *Do not use glue or silicone to set the profile if before ensuring that the functional position is correct.*