

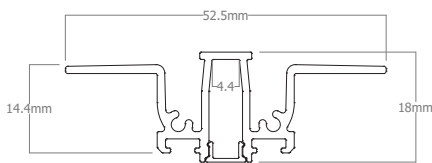


Perfil para empotrar en pladur de dimensiones reducidas, perfecto para instalaciones con poco espacio.
Compatible con modelo MINI LED.
Para uso interior.

*Profile for recessed plasterboard of reduced dimensions, perfect for installations with little space.
Compatible with MINI LED model.
For indoor use.*



Características técnicas / Technical data



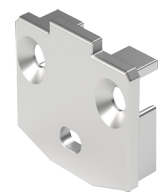
Potencia disipada / Power dissipation	Máx. 15W/m
Aleación de aluminio / Aluminium alloy	AL 6060
Longitud / Length	3m
IP	20
Acabado / Finish	Anodizado / Anodized Pintado / Painted



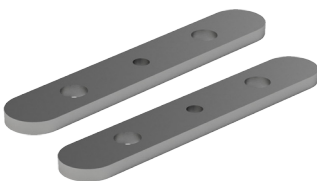
2102252



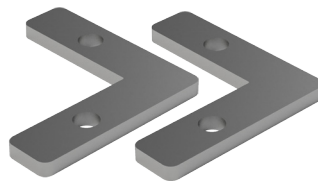
220380007



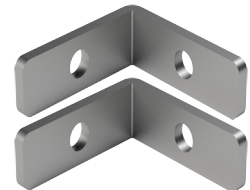
220381007



2430070



2430071

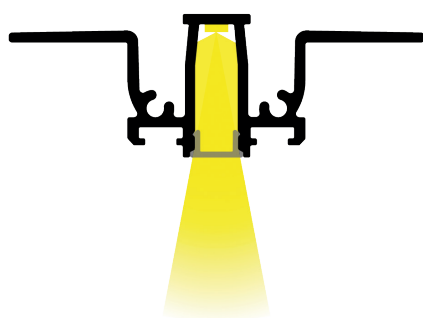


2430072

Referencia Reference	Descripción Description	Acabado Finish	Color Color
ST63-A	Perfil empotrable sin difusor Recessed profile without diffuser	Anodizado Anodized	● Plata mate Matt silver
ST63-B*	Perfil empotrable sin difusor Recessed profile without diffuser	Pintado Painted	○ Blanco White
ST63-N*	Perfil empotrable sin difusor Recessed profile without diffuser	Anodizado Anodized	● Negro Black
2102252	Difusor para STAR 63 Diffuser to STAR 63	● Opal / Frosted	
220380007	Tapa final para STAR 63 End cap to STAR 63	● Plata mate / Matt plate	
220381007	Tapa final con taladro para STAR 63 End cap with cable hole to STAR 63		
220380001	Tapa final para STAR 63 End cap to STAR 63	○ Blanco / White	
220381001	Tapa final con taladro para STAR 63 End cap with cable hole to STAR 63		
220380002	Tapa final para STAR 63 End cap to STAR 63	● Negro / Black	
220381002	Tapa final con taladro para STAR 63 End cap with cable hole to STAR 63		
2430070	Pieza unión, 2 piezas 1 juego para STAR 63 Union piece, 2 pieces 1 kit to STAR 63		
2430071	Pieza unión a 90°, 2 piezas 1 juego para STAR 63 90° union piece, 2 pieces 1 kit to STAR 63	● Plata mate / Matt plate	
2430072	Pieza unión a 90° interior o exterior, 2 piezas 1 juego para STAR 63 90° union piece internal or external, 2 pieces 1 kit to STAR 63		

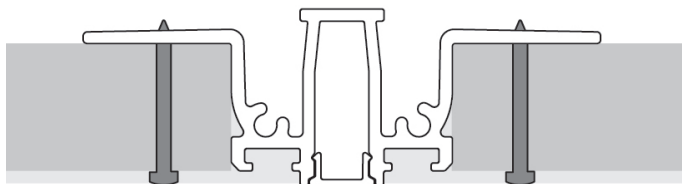
*Consultar plazo / Consult delivery time

• Difusores / Diffuser



25°
Opal
Frosted
-50% lumens

• **Opción de montaje / Assembly option**



⚠ Advertencias / Warnings

- Si la superficie donde va colocada la tira de LED tiene residuos, asegúrese de limpiarla hasta que quede libre de ellos.
- No utilizar este perfil para LEDs superiores a la potencia indicada, ya que no se podría garantizar la vida útil del LED.
- No utilice cola o silicona para fijar el perfil sin antes asegurar que la posición funcional es la correcta.
- *If the surface where the LED strip is located has debris, be sure to clean it until it is free of them.*
- *Not use this profile to LED above the indicated power because it could not guarantee the life of the LED.*
- *Do not use glue or silicone to set the profile if before ensuring that the functional position is correct.*