



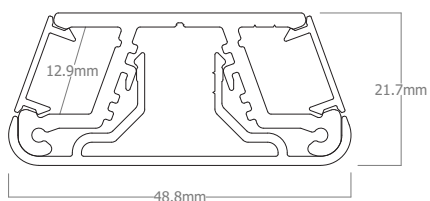
Perfil de superficie.
Fabricado con aluminio extrusionado y anodizado.
Diseñado como disipador de tiras de LED.

Surface profile.
Made of extruded and anodized aluminum.
Designed to dissipate LED strips.



Max. W/m
2x15W

AL
6060



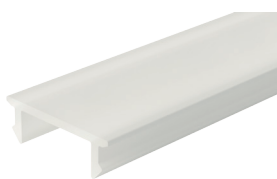
Características técnicas / Technical data

Potencia disipada / Power dissipation	Máx. 2x15W/m
Aleación de aluminio / Aluminium alloy	AL 6060
Longitud / Length	2m ⁽¹⁾
IP	20
Acabado / Finish	Anodizado / Anodized Pintado / Painted

(1) Otras medidas disponibles. Máximo 6m. / Other sizes available. Maximum 6m.



2100250



2100251



2100252



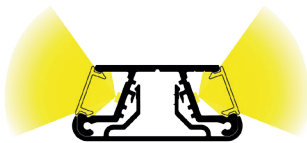
2100202



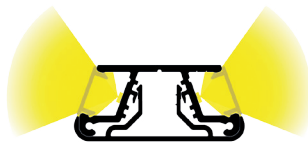
220250007

Referencia Reference	Descripción Description	Acabado Finish	Color Color
STTS-A	Perfil superficie sin difusor Surface profile without diffuser	Anodizado Anodized	● Plata mate Matt silver
STTS-B	Perfil superficie sin difusor Surface profile without diffuser	Pintado Painted	○ Blanco White
STTS-N	Perfil superficie sin difusor Surface profile without diffuser	Anodizado Anodized	● Negro Black
2100250	Difusor para STTS Diffuser to STTS	○ Transparente / Clear	
2100251	Difusor para STTS Diffuser to STTS	● Mate / Medium frosted	
2100252	Difusor para STTS Diffuser to STTS	● Opal / Frosted	
2100202	Difusor para STTS Diffuser to STTS	● Negro / Black	
220250007	Tapa final para STTS End cap to STTS	● Plata mate / Matt silver	
220250001	Tapa final para STTS End cap to STTS	○ Blanco / White	
220250002	Tapa final para STTS End cap to STTS	● Negro / Black	

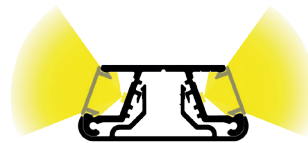
• Difusores / Diffusers



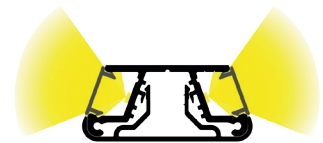
80° / 80°
Transparente
Clear
-0% lumens



80° / 80°
Mate
Medium frosted
-20% lumens



80° / 80°
Opal
Frosted
-40% lumens



80° / 80°
Negro
Black
-70% lumens

⚠ Advertencias / Warnings

- Si la superficie donde va colocada la tira de LED tiene residuos, asegúrese de limpiarla hasta que quede libre de ellos.
- No utilizar este perfil para LEDs superiores a la potencia indicada, ya que no se podría garantizar la vida útil del LED.
- No utilice cola o silicona para fijar el perfil sin antes asegurar que la posición funcional es la correcta.
- If the surface where the LED strip is located has debris, be sure to clean it until it is free of them.
- Not use this profile to LED above the indicated power because it could not guarantee the life of the LED.
- Do not use glue or silicone to set the profile if before ensuring that the functional position is correct.