

Superficie Surface Star 2D Plus

ST2D Plus

Perfil de superficie.
Fabricado con aluminio extrusionado y anodizado.
Diseñado como disipador de tiras de LED.

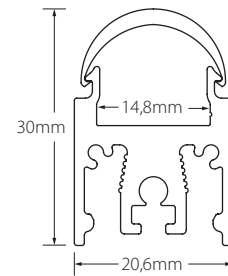
Surface profile.
Made of extruded and anodized aluminium.
Designed to dissipate LED strips.



Características técnicas Technical data

Potencia disipada Power dissipation	Máx. 40W/m
Aleación de aluminio Aluminium alloy	AL6060
Longitud Length	2m ⁽¹⁾
IP	20
Acabado Finish	Anodizado Anodized / Pintado Painted

⁽¹⁾ Otras medidas disponibles. Máximo 6m. Other sizes available. Maximum 6m.



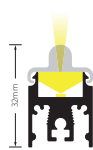
2100150
Transparente
Clear
90°
-0% lm



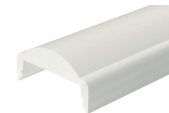
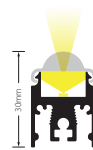
2100151
Mate
Medium frosted
90°
-30% lm



2100155
Óptica 15°
15° lens
15°
-15% lm



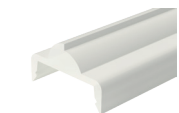
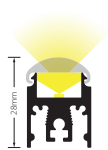
2100156
Óptica 30°
30° lens
30°
-15% lm



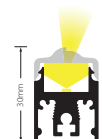
2100157
Óptica 60°
60° lens
60°
-15% lm



2100158
Óptica 90°
90° lens
90°
-15% lm



2102754
Óptica Asimétrica
Asymmetrical lens
Asimétrica
-15% lm



Superficie Surface

Star 2D Plus



220450007
Tapa final
End cap



220460007
Tapa final, óptica 15°
End cap, 15° lens

Incluye tornillos
Screws included



220470007
Tapa final, óptica 30°
End cap, 30° lens

Incluye tornillos
Screws included



220480007
Tapa final, óptica 60° y 90°
End cap, 60° and 90° lens

Incluye tornillos
Screws included



220490007
Tapa final, óptica Asimétrica
End cap, Asymmetrical lens

Incluye tornillos
Screws included



231028070
Clip sujeción
Mounting bracket



233032076
Bracket 15°
Bracket 15°

Incluye tornillos
Screws included



233033076
Bracket 30°
Bracket 30°

Incluye tornillos
Screws included



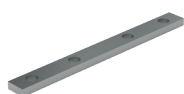
233034076
Bracket 45°
Bracket 45°

Incluye tornillos
Screws included



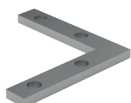
234021073
Clip sujeción basculante
Swing clamp

Incluye tornillos
Screws included



2410010
Pieza unión
Union piece

Incluye tornillos y adhesivo fuga luz
Screws and light leak adhesive included



2410011
Pieza unión 90°
90° union piece

Incluye tornillos y adhesivo fuga luz
Screws and light leak adhesive included



2410012
Pieza unión 90° int./ext.
Int./ext. 90° union piece

Incluye tornillos y adhesivo fuga luz
Screws and light leak adhesive included



2441000701702
Adhesivo fuga de luz
Light leak adhesive

70x17mm

Referencia Reference	Descripción Description	Acabado Finish	Color Color
ST2P-A	Perfil superficie aluminio Aluminium surface profile	Anodizado Anodized	● Plata mate Matt silver
ST2P-B	Perfil superficie aluminio Aluminium surface profile	Pintado Painted	○ Blanco White
ST2P-N	Perfil superficie aluminio Aluminium surface profile	Anodizado Anodized	● Negro Black



Superficie Surface

Star 2D Plus

Accesorios Accessories

Referencia Reference	Descripción Description	Acabado / Color Finish / Color
2100150	Difusor para ST2P Diffuser to ST2P	Transparente Clear
2100151	Difusor para ST2P Diffuser to ST2P	Mate Medium
2100155*	Difusor óptica 15° para ST2P 15° lens diffuser to ST2P	Mate Medium
2100156*	Difusor óptica 30° para ST2P 30° lens diffuser to ST2P	Mate Medium
2100157*	Difusor óptica 60° para ST2P 60° lens diffuser to ST2P	Mate Medium
2100158*	Difusor óptica 90° para ST2P 90° lens diffuser to ST2P	Mate Medium
2102754*	Difusor óptica asimétrica para ST2P Asymmetrical lens diffuser to ST2P	Mate Medium

* Disponible solo hasta 2m
Available only until 2m

Accesorios Accessories

Referencia Reference	Descripción Description	Acabado / Color Finish / Color
220450007	Tapa final aluminio Aluminium end cap	
220460007	Tapa final aluminio para óptica 15° Aluminium end cap for 15° lens	
220470007	Tapa final aluminio para óptica 30° Aluminium end cap for 30° lens	Plata mate Matt silver
220480007	Tapa final aluminio para óptica 60° y 90° Aluminium end cap for 60° and 90° lens	
220490007	Tapa final aluminio para óptica Asimétrica Aluminium end cap for Asymmetrical lens	
220450001	Tapa final aluminio Aluminium end cap	
220460001	Tapa final aluminio para óptica 15° Aluminium end cap for 15° lens	
220470001	Tapa final aluminio para óptica 30° Aluminium end cap for 30° lens	Blanco White
220480001	Tapa final aluminio para óptica 60° y 90° Aluminium end cap for 60° and 90° lens	
220490001	Tapa final aluminio para óptica Asimétrica Aluminium end cap for Asymmetrical lens	
220450002	Tapa final aluminio Aluminium end cap	
220460002	Tapa final aluminio para óptica 15° Aluminium end cap for 15° lens	
220470002	Tapa final aluminio para óptica 30° Aluminium end cap for 30° lens	Negro Black
220480002	Tapa final aluminio para óptica 60° y 90° Aluminium end cap for 60° and 90° lens	
220490002	Tapa final aluminio para óptica Asimétrica Aluminium end cap for Asymmetrical lens	
231028070	Clip sujeción metálico Metal mounting bracket	Zincado Zinc
233032076	Bracket 15° 15° bracket	
233033076	Bracket 30° 30° bracket	Plata mate Matt silver
233034076	Bracket 45° 45° bracket	
2410010	Pieza unión metálica Metal union piece	
2410011	Pieza unión a 90° metálica Metal 90° union piece	Zincado Zinc
2410012	Pieza unión a 90° metálica int./ext. Metal int./ext. 90° union piece	
234021073	Clip sujeción metálico basculante, 2 ud. Metal swing clamp, 2 un.	Plata mate Matt silver
2441000701702	Adhesivo para fuga de luz S Light leak adhesive S	Negro Black



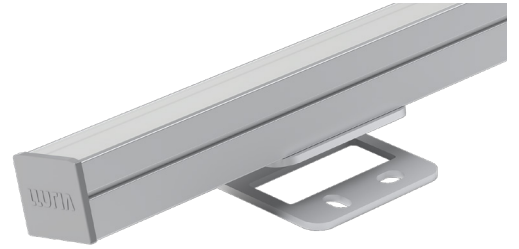
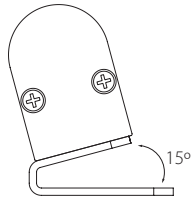
Superficie Surface Star 2D Plus

Brackets 15°, 30°, 45°

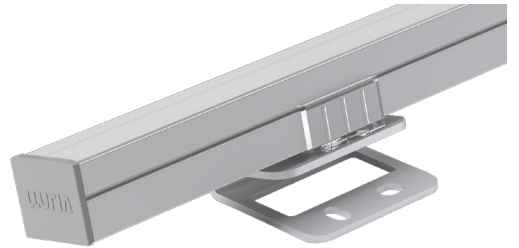
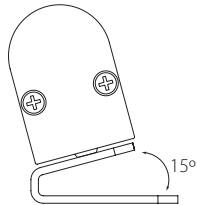
233032076



Perfil fijado directamente a bracket
Profile fixed directly to bracket



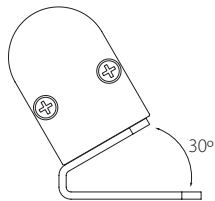
Perfil fijado con clip al bracket
Profile fixed with clip to the bracket



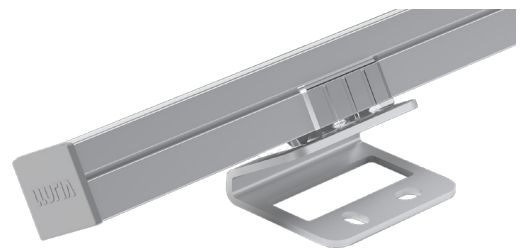
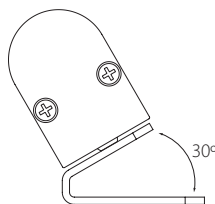
233033076



Perfil fijado directamente a bracket
Profile fixed directly to bracket



Perfil fijado con clip al bracket
Profile fixed with clip to the bracket



Superficie Surface

Star 2D Plus

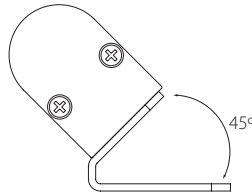
Brackets

15°, 30°, 45°

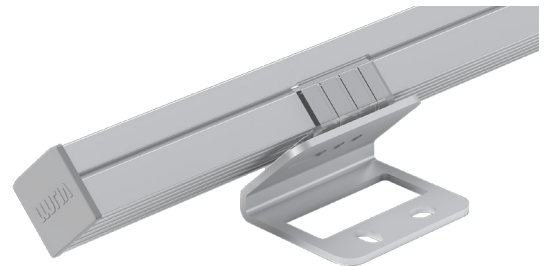
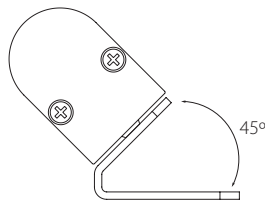
233034076



Perfil fijado directamente a bracket
Profile fixed directly to bracket



Perfil fijado con clip al bracket
Profile fixed with clip to the bracket



Advertencias Warnings

- Si la superficie donde va colocada la tira de LED tiene residuos, asegúrese de limpiarla hasta que quede libre de ellos.
- No utilizar este perfil para LEDs superiores a la potencia indicada, ya que no se podría garantizar la vida útil del LED.
- No utilice cola o silicona para fijar el perfil sin antes asegurar que la posición funcional es la correcta.
- If the surface where the LED strip is located has debris, be sure to clean it until it is free of them.
- Not use this profile to LED above the indicated power because it could not guarantee the life of the LED.
- Do not use glue or silicone to set the profile if before ensuring that the functional position is correct.

