

**Ambient lighting, visual comfort**

New profiles - Fall '24

**ST37, ST38 & ST70**

**LLUCIA**  
Your Partner in Lighting

# ISO 14001

## Gestión ambiental

Gracias a la certificación ISO 14001, demostramos nuestro compromiso con la gestión ecológica y la sostenibilidad, minimizando el impacto ambiental y mejorando nuestras prácticas. En Lluria, creemos que cuidar del planeta es responsabilidad de todos y trabajamos por un futuro más sostenible.

## Environmental management

Thanks to the ISO 14001 certification, we demonstrate our commitment to ecological management and sustainability, minimising our environmental impact and improving our practices. At Lluria, we believe that caring for the planet is everyone's responsibility and we are working towards a more sustainable future.

## Management environnemental

Grâce à la certification ISO 14001, nous démontrons notre engagement en matière de gestion écologique et de durabilité, en minimisant notre impact sur l'environnement et en améliorant nos pratiques. Chez Lluria, nous pensons que la protection de la planète est la responsabilité de chacun et nous travaillons à un avenir plus durable.



# WE CARE

Nos preocupamos por nuestro entorno.

Por ello, más del 80% del aluminio de nuestros perfiles proviene de aluminio reciclado, preconsumo y posconsumo.

Esto supone una **reducción de la huella de carbono y del consumo de CO2 del 66%** respecto a la media mundial de la producción de aluminio.

Además, solo utilizamos una aleación 6060, una aleación que tiene muy buena resistencia a la corrosión y perfecta para la disipación del calor de las tiras LED.

We care about our environment.

That's why more than 80% of the aluminium in our profiles comes from recycled, pre-consumer and post-consumer aluminium.

Thanks to this, we have **reduced our carbon footprint and CO2 consumption by 66%** compared to the world average for aluminium production.

In addition, we only use Alloy 6060, an alloy that has very good corrosion resistance and is ideal for promoting heat dissipation in LED strips.

Nous nous soucions de notre environnement.

C'est pourquoi plus de 80% de l'aluminium contenu dans nos profils provient d'aluminium recyclé, de pré/post- consommation.

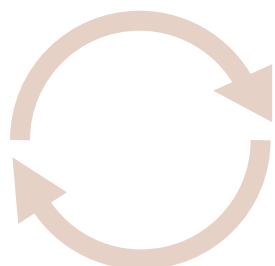
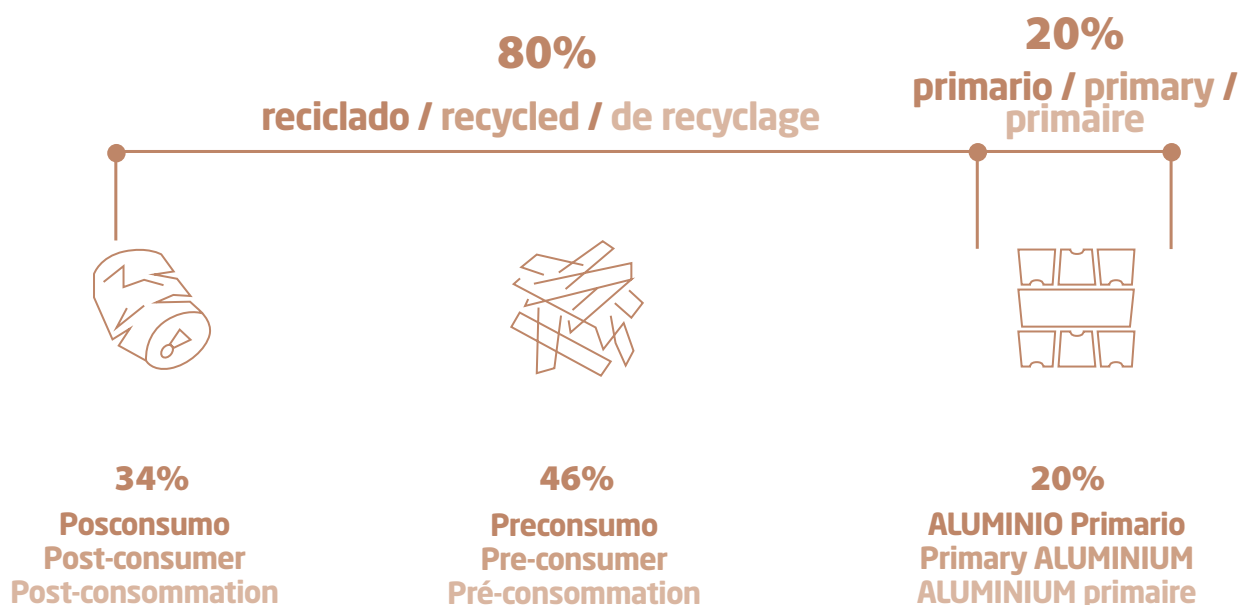
Cela signifie une **réduction de l'empreinte carbone et de la consommation de CO2 de 66%** par rapport à la moyenne mondiale pour la production d'aluminium.

En outre, nous n'utilisons que l'alliage 6060, un alliage qui présente une très bonne résistance à la corrosion et qui est parfait pour la dissipation de la chaleur des rubans LED.

**Fabricado en España**

**Made in Spain**

**Produit en Espagne**



**REDUCCIÓN DE LA HUELLA DE CARBONO Y DEL CONSUMO ENERGÉTICO**  
Ahorro de energía por la reducción de procesos

**REDUCED CARBON FOOTPRINT AND ENERGY CONSUMPTION**  
Energy savings from cutting down process

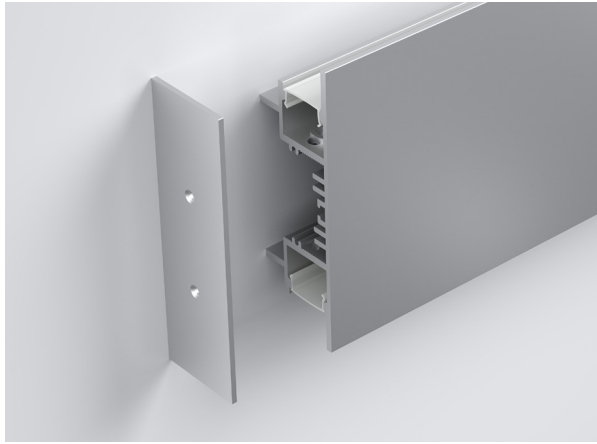
**RÉDUCTION DE L'EMPREINTE CARBONE ET DE LA CONSOMMATION D'ÉNERGIE**  
Économies d'énergie grâce à la réduction des processus

# ST37

Star 37

Superficie - Surface - Surface

New
2x45W Max. W/m
IP20
AL 6060
Custom
2m
Available 6m
MS
W
B
Ready to paint



Code	Finish	
ST37-A	Plata mate Matt silver Argent mat	
ST37-B	Blanco White Blanc	Perfil superficie de aluminio Aluminium surface profile
ST37-N	Negro Black Noir	Perfil surface en aluminium
ST37-PA	Listo para pintar Ready to paint Prêt à peindre	



\*\*Pintado con RAL o anodizado personalizado bajo pedido. Medidas de perfil y plazos de entrega a consultar / Painted in a RAL colour or custom anodized on request. Consult us on profile measurements and delivery times / Peinture RAL ou anodisation personnalisée sur demande. Mesures du profil et délais de livraison à consulter



**Con capacidad de incluir una fuente FAF interna**  
**Capable of including an internal FAF source**  
**Possibilité d'inclure une source FAF interne**

Perfil de doble emisión. Disipa altas potencias.  
 Dual emission profile. High power dissipation.  
 Profil à double enjeu. Dissipation de puissance élevée.



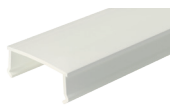
**Bajo pedido. Perfil pintable en obra**  
**On request. Paintable profile on site**  
**Sur demande. Profil à peindre sur place**



Accesorios / Accessories / Accessoires



**2100350**  
Difusor transparente  
Clear diffuser  
Diffuseur transparent



**2100351**  
Difusor mate  
Medium frosted diffuser  
Diffuseur mat



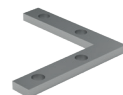
● **220710007**  
○ **220710001**  
● **220710002**  
● **220710004**  
Tapa final  
End cap  
Embout d'extrémité



**235037080\***  
Soporte sujeción pared  
Wall mounting bracket  
Support de fixation murale



**2410010**  
Pieza unión  
Union piece  
Pièce d'union



**2410011**  
Pieza unión 90°  
90° Union piece  
Pièce d'union 90°



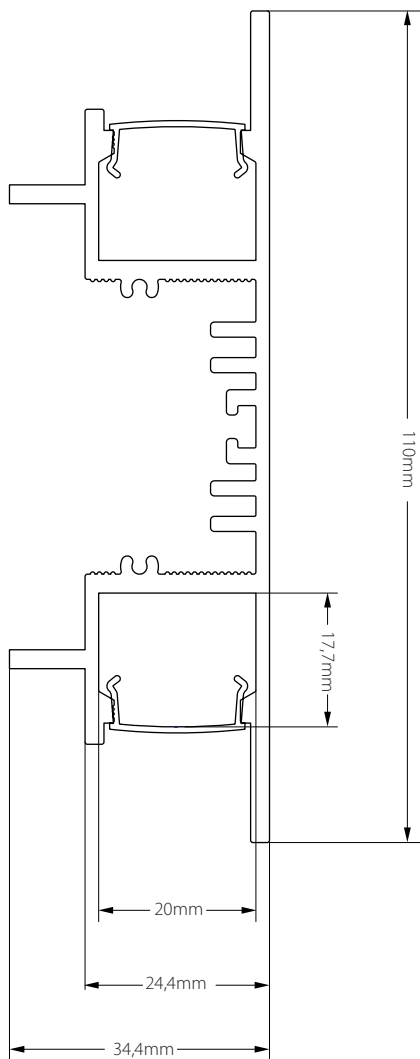
**2410012**  
Pieza unión 90° int./ext.  
Int./ ext. 90° Union piece  
Pièce d'union 90° interne ou externe



**2441000701702**  
Adhesivo fuga de luz  
Light leak adhesive  
Adhésif contre les fuites de lumière

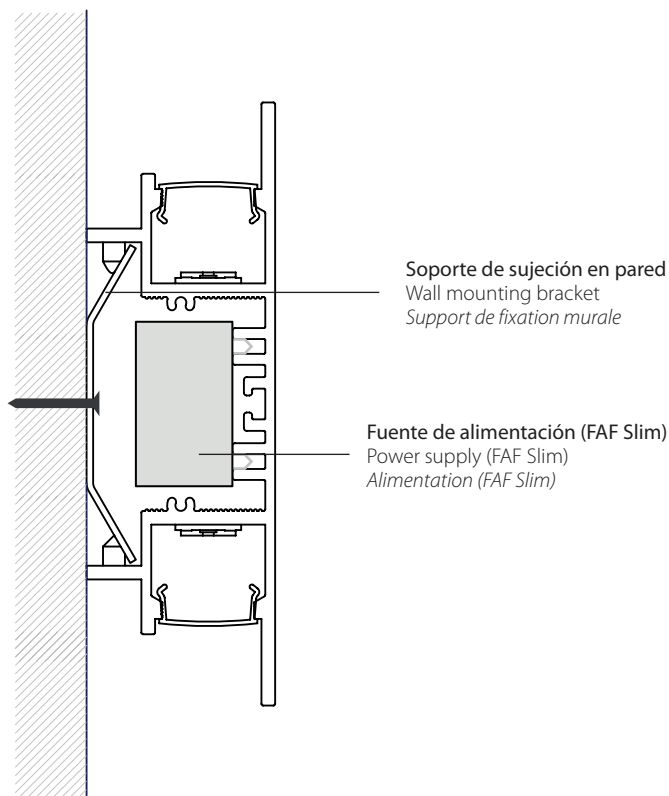
\* Fijación cada metro / Fixing every metre / Fixation de chaque mètre

Dibujo técnico / Technical drawing / Dessin technique

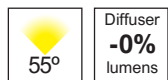


E/SC 1:1

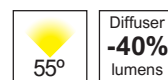
Instalación / Facility / Facilité



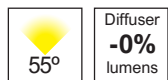
Difusores / Diffusers / Diffuseurs



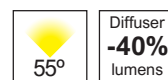
Transparente / Clear / Transparent (2100350)



Mate / Medium frosted / Mat (2100351)



Diffuser -0% lumens

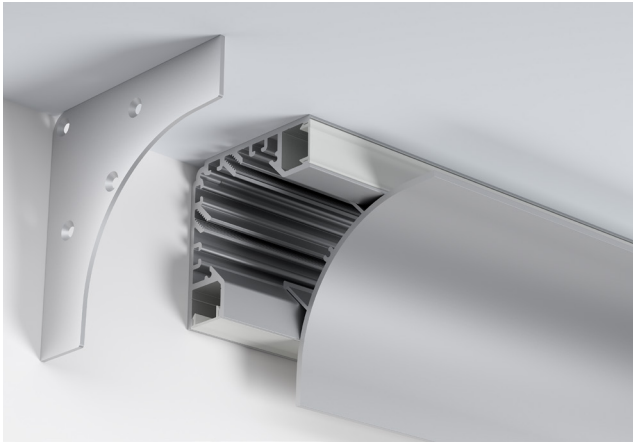
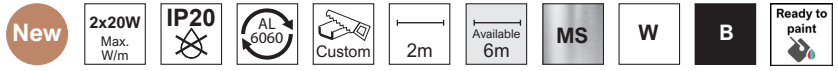


Diffuser -40% lumens

# ST38

Star 38

Superficie - Surface - Surface



**Con capacidad de incluir una fuente FAF interna**  
**Capable of including an internal FAF source**  
**Possibilité d'inclure une source FAF interne**

Efecto candileja. Perfil esquinero vertical y horizontal.

Cove lighting effect. Vertical and horizontal corner profile.

Éclairage indirect effet corniche. Profilé d'angle vertical et horizontal.

Code	Finish	
ST38-A	Plata mate Matt silver Argent mat	Perfil superficie de aluminio Aluminium surface profile Profil surface en aluminium
ST38-B	Blanco White Blanc	
ST38-N	Negro Black Noir	
ST38-PA	Listo para pintar Ready to paint Prêt à peindre	



\*\*Pintado con RAL o anodizado personalizado bajo pedido. Medidas de perfil y plazos de entrega a consultar / Painted in a RAL colour or custom anodized on request. Consult us on profile measurements and delivery times / Peinture RAL ou anodisation personnalisée sur demande. Mesures du profil et délais de livraison à consulter



**Bajo pedido. Perfil pintable en obra**  
**On request. Paintable profile on site**  
**Sur demande. Profil à peindre sur place**



## Accesorios Accesories Accessoires



**2100250**  
Difusor transparente  
Clear diffuser  
Diffuseur transparent



**2100251**  
Difusor mate  
Medium frosted diffuser  
Diffuseur mat



**2100252**  
Difusor opal  
Frosted diffuser  
Diffuseur opale



**2100202**  
Difusor negro  
Black diffuser  
Diffuseur noir



● **220720107**  
○ **220720101**  
● **220720102**  
● **220720204**  
Tapa final  
End cap  
Embout d'extrémité



**2410010**  
Pieza unión  
Union piece  
Pièce d'union

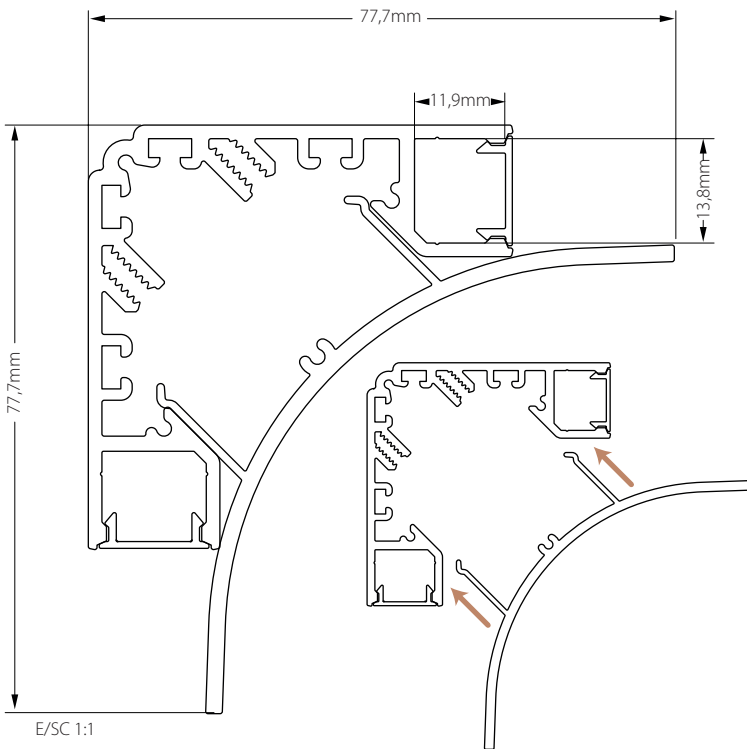


**2410011**  
Pieza unión 90°  
90° Union piece  
Pièce d'union 90°

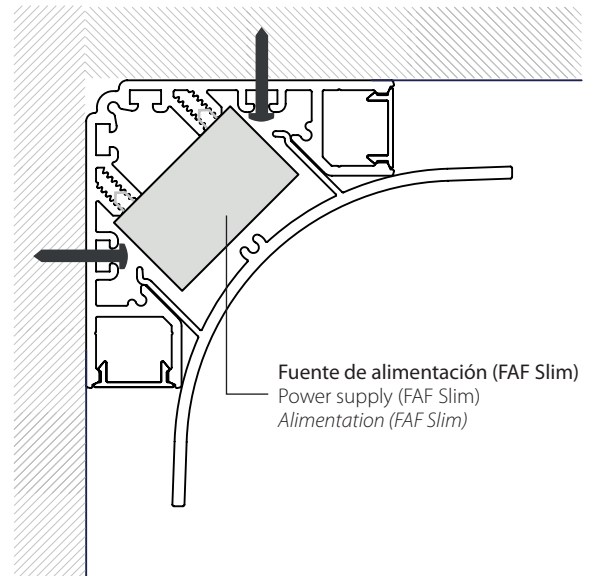


**2410012**  
Pieza unión 90° int./ext.  
Int./ext. 90° Union piece  
Pièce d'union 90° interne  
ou externe

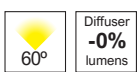
## Dibujo técnico / Technical drawing / Dessin technique



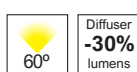
## Instalación / Facility / Facilité



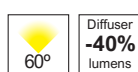
## Difusores / Diffusers / Diffuseurs



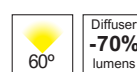
Transparente / Clear /  
Transparent  
(2100250)



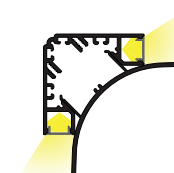
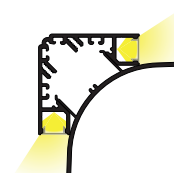
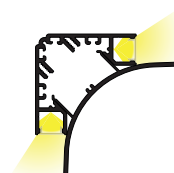
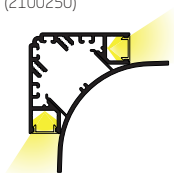
Mate / Medium frosted / Mat  
(2100251)



Opal / Frosted / Opale  
(2100252)



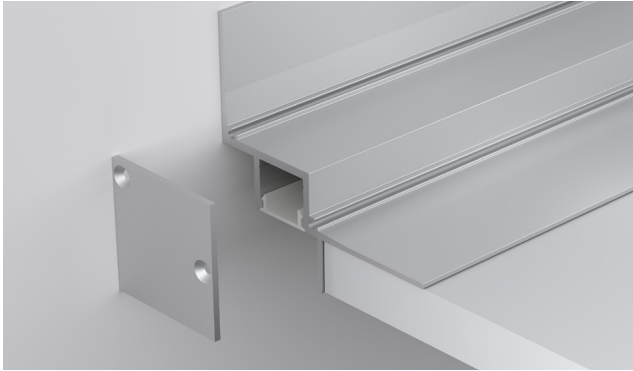
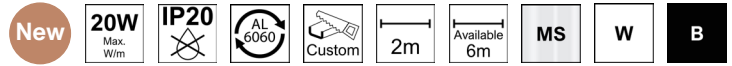
Negro / Black / Noir  
(2100202)






# ST70

Star 70

Pladur - Plasterboard - Plaque de plâtre



Code	Finish	
ST70-A	 Plata mate Matt silver Argent mat	Perfil empotrable de aluminio
ST70-B	 Blanco White Blanc	Aluminium recessed profile Profil encastrable en aluminium
ST70-N	 Negro Black Noir	



Efecto foseado. Para grosores de pladur de 12,5mm, 13mm y 15mm.

Cove lighting effect. For plasterboard thicknesses of 12.5mm, 13mm and 15mm.

Éclairage indirect effet corniche. Pour les plaques de plâtre d'une épaisseur de 12,5 mm, 13 mm et 15 mm.





## Accesorios / Accessoires / Accessoires



**2100250**  
Difusor transparente  
Clear diffuser  
Diffuseur transparent



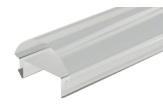
**2100251**  
Difusor mate  
Medium frosted diffuser  
Diffuseur mat



**2100252**  
Difusor opal  
Frosted diffuser  
Diffuseur opale



**2100202**  
Difusor negro  
Black diffuser  
Diffuseur noir



**2100256**  
Óptica 30°  
poli-carbonato  
30° lens polycarbonate  
Optique de 30° en  
polycarbonate



● **220700207**  
○ **220700201**  
● **220700202**  
Tapa final izquierda  
End cap, left  
Embout d'extrémité  
gauche

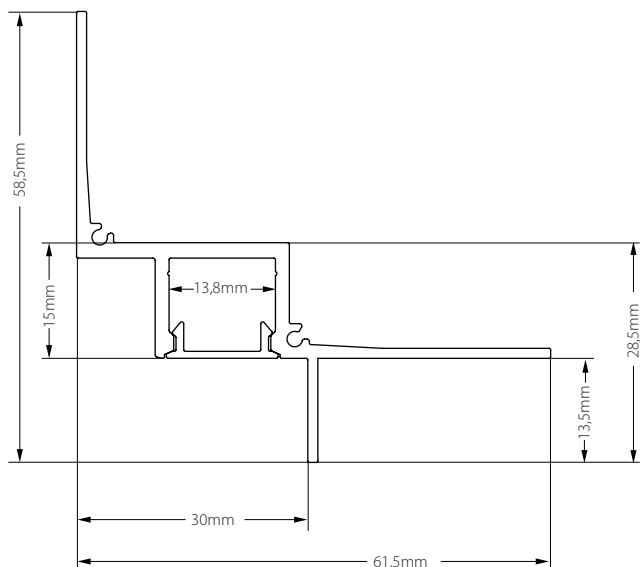


● **220700107**  
○ **220700101**  
● **220700102**  
Tapa final derecha  
End cap, right  
Embout d'extrémité  
droit



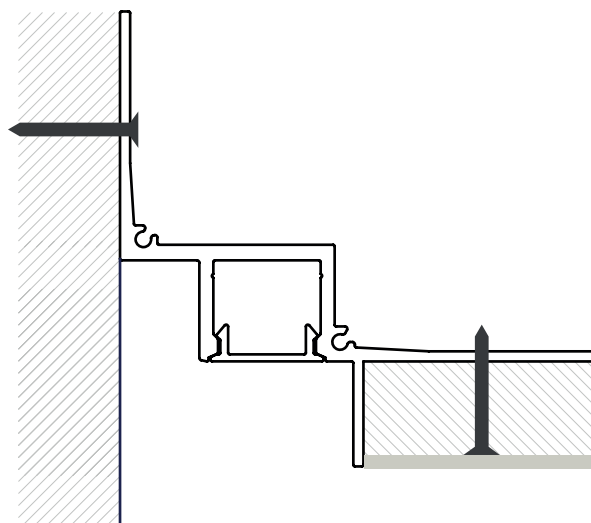
**2441000701702**  
Adhesivo fuga de luz  
Light leak adhesive  
Adhésif contre les fuites de  
lumière

## Dibujo técnico / Technical drawing / Dessin technique

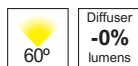


E/SC 1:1

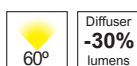
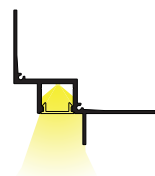
## Instalación / Facility / Facilité



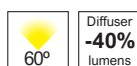
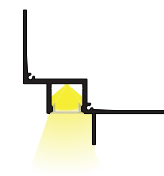
## Difusores / Diffusers / Diffuseurs



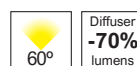
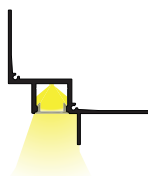
Diffuser  
-0%  
lumens  
Transparente / Clear /  
Transparent  
(2100250)



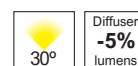
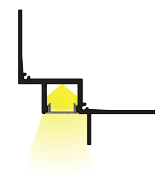
Diffuser  
-30%  
lumens  
Mate / Medium frosted / Mat  
(2100251)



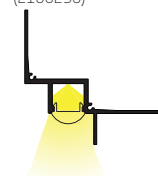
Diffuser  
-40%  
lumens  
Opal / Frosted / Opale  
(2100252)



Diffuser  
-70%  
lumens  
Negro / Black / Noir  
(2100202)



Diffuser  
-5%  
lumens  
Transparente / Clear  
/ Transparent  
(2100256)







**LLURIA**  
Your Partner in Lighting

*lluria.com*

